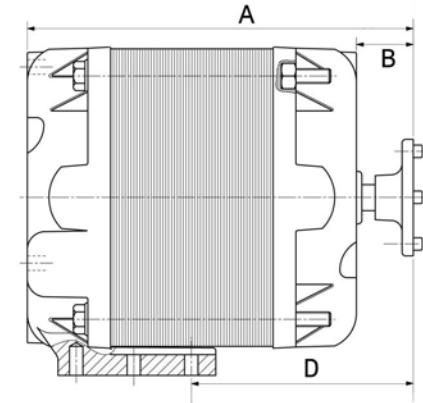




AFTER MARKET SHADED POLE NU SERIES MOTORS



- **Shaded pole** - 4 poles - 115 or 230V, 50/60 Hz.
- **Frame:** 3.3" square, totally enclosed
- **Operation:** all angle, continuous air over
- **Rotation:** CCW from shaft end
- **Bearings:** Sintec sleeve, permanently lubricated
- **Cord:** 21/23" lead length with #10 ring studs
- **Fan blade hub:** 4 pins (.133"Ø) on 1" Ø CL.
- **Foot mounting:** 4 holes Ø .146" (1.126"x .626")
- **Front mounting:** for shroud / guard
- **Rear mounting:** 3 holes Ø 8-36 UNF @120° on 2.835" BC
- **Single packed:** Box dim. 5" x 5" x 5"
- **Accessories:** nuts, screws, American fan blade adapter



Stock #	Watts	HP	Model / OEM #	Volt	Amp	Protect.	RPM	Box Wgt. (lbs.)	Dimensions (in.)		
									A	B	D
EC4W115	4	1/185	NU4-13-1 / NUT6B04ZUN301	115	0.36	Imp.	1550	4	2.82"	0.49"	1.65"
EC4W230	4	1/185	NU4-13-3 / NUT6B04ZUN201	230	0.18	Imp.	1550	4	2.82"	0.49"	1.65"
EC5W115	5	1/150	NU5-13-2 / NUT6B05PUN301	115	0.40	TH	1550	4	2.82"	0.49"	1.65"
EC5W230	5	1/150	NU5-13-4 / NUT6B05PUN201	230	0.20	TH	1550	4	2.82"	0.49"	1.65"
EC6W115	6	1/125	NU6-20-1 / NUT6B06ZUN301	115	0.41	Imp.	1550	4	3.05"	0.49"	1.89"
EC6W230	6	1/125	NU6-20-3 / NUT6B06ZUN201	230	0.20	Imp.	1550	4	3.05"	0.49"	1.89"
EC9W115	9	1/83	NU9-20-2 / NUT6B09PUN301	115	0.58	TH	1550	4	3.05"	0.49"	1.89"
EC9W230	9	1/83	NU9-20-4 / NUT6B09PUN201	230	0.35	TH	1550	4	3.05"	0.49"	1.89"
EC16W115	16	1/47	NU18-30-2 / NUT6B18PUN301	115	0.85	TH	1550	4	3.60"	0.63"	2.44"
EC16W230	16	1/47	NU16-30-4 / NUT6B16PUN201	230	0.50	TH	1550	4	3.60"	0.63"	2.44"
EC34W115	34	1/20	NU34-45-2 / NUT6B34PUN301	115	1.60	TH	1550	5	4.19"	0.61"	2.40"
EC34W230	34	1/20	NU34-45-4 / NUT6B34PUN201	230	0.80	TH	1550	5	4.19"	0.61"	2.40"

Notes: EC25W115 replaced by EC34W115 , EC25W230 replaced by EC34W230. For NU16-30-2 / NUT6B16PUN301: refer to EC16W115 (NU18-30-2).